



SQ

LA FRONTERA SQUARE

RETAIL FOR LEASE

2601 La Frontera Boulevard
Round Rock, TX 78681

Austin Submarket

LEASES AVAILABLE FROM 1,000 SF

OFFICE | RETAIL | RESTAURANT

RATES

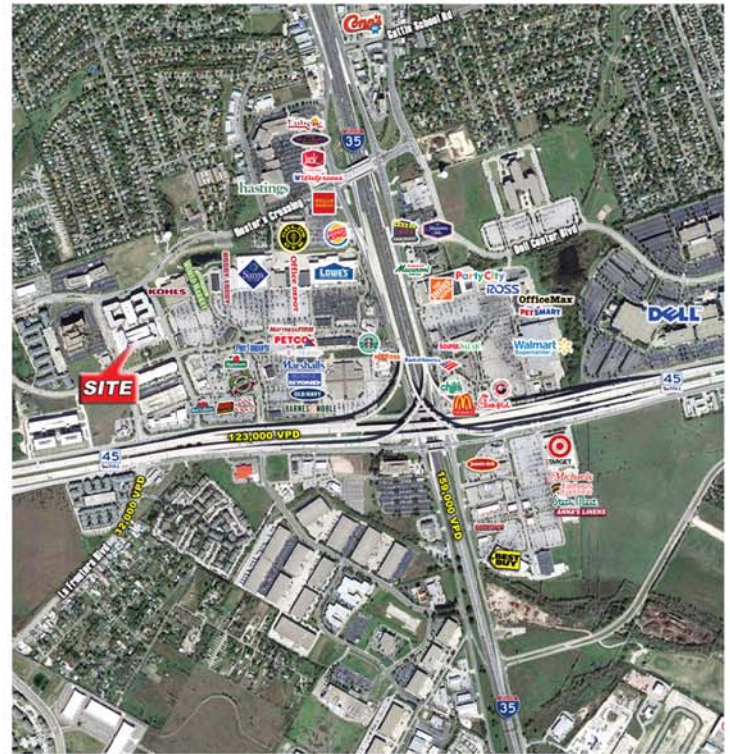
Rent: Call for Rent

NNN: Only \$4.20 PSF

Located in the heart of La Frontera, a 328 acre master-planned community just north of Austin.

Williamson County is one of the FASTEST growing counties in the U.S. The immediate area has experienced over 50% growth since 1990.

Excellent access and minutes away from Dell (8,500 employees), Samsung, HP & IBM. It's the perfect place to live, shop, work & play.



- Easily sub-dividable shell space
- Highly competitive tenant improvement packages
- Finish out completion in as little as 90 days

**CLICK HERE FOR
MORE INFORMATION OR
CALL 512.501.2077**

1 MI
7,054
\$70,697

3 MI
68,670
\$77,475

5 MI
220,987
\$81,434

DEMOGRAPHICS

POPULATION

AVG HH INCOME

JESSICA EVANS
jessica@tontiproperties.com

ADAM AUENSEN
adam@tontiproperties.com

www.lafronterasq.com/retail.asp

The information contained herein was obtained from sources believed to be reliable; however, no guarantees, warranties, or representations are made to the completeness or accuracy thereof.

TONTI PROPERTIES